



Engineered system for enhanced shock-absorption and structure-borne sound isolation in gyms, free-weight, and multi-purpose areas.

## Material Composition

PUR bonded, engineered roll system with a patented wear layer for enhanced stability, and high damping components for outstanding shock and vibration isolation, particularly in the low frequency range. Available in different designs and colors.

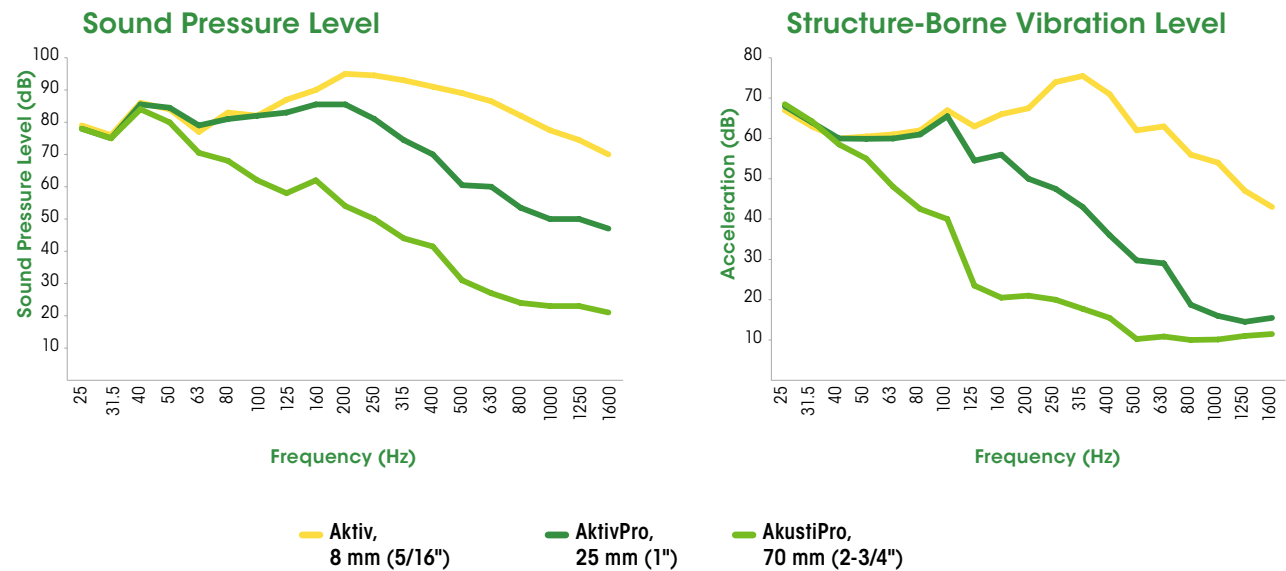
## Thickness

- 70 mm

## Test Data

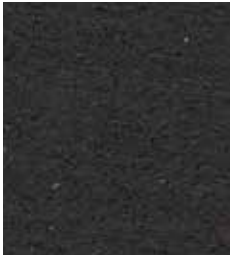
Drop Height 1000 mm. Various weights. Contact us for detailed information

## Performance comparison: standard gym flooring vs. the new Regupol AkustiPro



Please contact us for detailed testing information and product data.

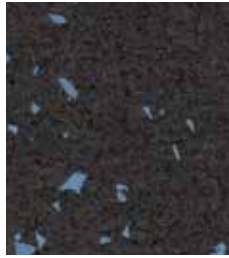
## Core Series



**10100**  
Jet Black



**10101**  
Gray Hound



**10102**  
Jayz Blue

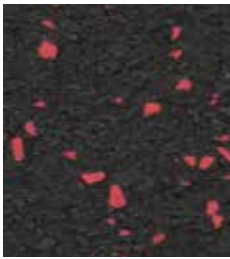


**10103**  
Blue Streak



**10104**  
Titan Tan

## Strength Series



**10109**  
Raging Red



**AK35100B**  
Gray Ghost



**35105**  
Red Devil



**35107**  
Stormy Night



**35109**  
Blue Devil

## Intense Series



**95102**  
Thunder Gray



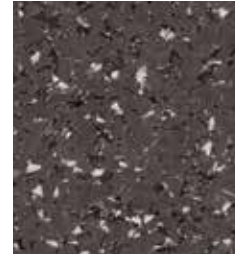
**95105**  
Avalanche Gray



**95132**  
Gotham



**95134**  
Iron Den



**95135**  
Backyard Scrum



**95136**  
Silver Lining



**95137**  
Cedar Fit

Regupol America, LLC is a product manufacturer and does not represent itself as a consultant, engineer, or advisor in construction methods, standards, and compliance. Therefore, Regupol America only warrants its products under its standard limited warranty (available by request), and does not represent or warrant any advice, suggestions, instructions, whether formal or informal, oral or written, in conjunction with any sales of its products. Any such advice is not intended for a particular purpose and should not be acted or relied upon as such. Any such advice is not represented as being all-inclusive, correct, complete or up-to-date. The information and data contained herein are based on industry accepted testing, manufacturing tolerances and prior product usage as set forth. It is intended as descriptive of the performance characteristics and capabilities of Regupol/Regufoam and does not certify applicability for any particular or specific project. Technical assistance, calculations and design recommendations are available from Regupol America, and are subject to terms and conditions provided upon request.

**REGUPOL® AMERICA**